

# VOLCA S3 HI-3 HRO WG SRC

GASTON MILLE

## 8" ANKLE BOOT - EN ISO 20349



Protective Velcro overflap

### EN ISO 20345

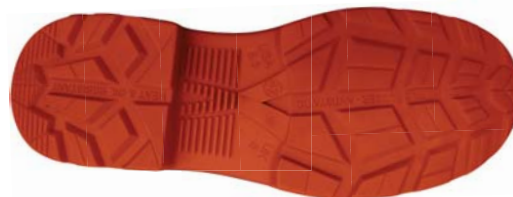
**SB** : Basic requirement (innocuousness, comfort, strength, resistance to shocks hazards & compression 200 J)  
**S1** : SB + closed back + A + E + FO  
**S1P** : S1 + P  
**S2** : S1 + WRU  
**S3** : S2 + P + studded sole

### MARKING

**A** : Antistatic footwear  
**AN** : Ankle protection  
**CI** : Insulation against cold  
**E** : Energy absorption in the heel region  
**ESD** : Electro Static Discharge  
**FO** : Resistance to fuel oil of outsole  
**HI** : Insulation against heat  
**M** : Metatarsal protection  
**P** : Penetration resistance  
**SRA** : Slipping resistance on ceramic tile wet with dilute soap solution  
**SRB** : Slipping resistance on smooth steel with glycerol  
**SRC** = SRA + SRB  
**WR** : Water resistant  
**WRU** : Water resistant upper  
**HRO** : Heat resistant outsole 300°C

### EN ISO 20349

**WG** : Molten metal splinters  
**HI-3** : Insulation of the sole against heat (<250°C)



Spaced studs : non clogging sole pattern

## METAL FREE

Model	Item code	Standard	Marking	EUR Sizes	UK Sizes	US Sizes	Net weight/pair (kg) (42)	Full height	
VOLCA	VOAH3	EN ISO 20349 2010	S3 HI-3 HRO WG SRC	39/47	5,5/12	6/12,5	1,3	19 cm	8 inches

### SOLE

- Textile antiperforation midsole 1 430 N
- Nitrile rubber antistatic sole
- High resistance to extreme heat (>300°C)
- Excellent grip: SRC rating
- Heel grip: 14 mm / 0,55 inch

### ENVIRONMENT

- Welding industry, steelworks
- Special hazard, heavy duty

### UPPER

- Composite toe cap 240 J
- Very sturdy leather (2-2,2mm)
- Anti-spark & waterproof tongue
- Flame retardant stitching
- Antiperspiration and antibacterial lining
- Leather padded tongue

### FOCUS

- Meets EN ISO 20349
- Quick slip on/off
- Perfect ankle support

